

NAME: _____

QUADRATIC FUNCTIONS REVIEW

For each quadratic function below:

- Choose the correct graph from the handout and stick it next to each equation.
- Determine the transformations, vertex, opening, maximum/minimum and number of zeros.

1.) $y = -3x^2$

TRANSFORMATIONS:

VERTEX: _____

DIRECTION OF OPENING: _____

MAXIMUM/MINIMUM: _____

NUMBER OF ZEROS: _____

2.) $y = 2(x - 1)^2$

TRANSFORMATIONS:

VERTEX: _____

DIRECTION OF OPENING: _____

MAXIMUM/MINIMUM: _____

NUMBER OF ZEROS: _____

NAME: _____

$$3.) y = \frac{1}{2}x^2 - 3$$

TRANSFORMATIONS:

VERTEX: _____

DIRECTION OF OPENING: _____

MAXIMUM/MINIMUM: _____

NUMBER OF ZEROS: _____

$$4.) y = -2(x + 1)^2 - 5$$

TRANSFORMATIONS:

VERTEX: _____

DIRECTION OF OPENING: _____

MAXIMUM/MINIMUM: _____

NUMBER OF ZEROS: _____

$$5.) y = -\frac{1}{2}x^2$$

TRANSFORMATIONS:

VERTEX: _____

DIRECTION OF OPENING: _____

MAXIMUM/MINIMUM: _____

NUMBER OF ZEROS: _____

NAME: _____

6.) $y = (x - 2)^2 + 7$

TRANSFORMATIONS:

VERTEX: _____

DIRECTION OF OPENING: _____

MAXIMUM/MINIMUM: _____

NUMBER OF ZEROS: _____

7.) $y = -(x + 7)^2 - 5$

TRANSFORMATIONS:

VERTEX: _____

DIRECTION OF OPENING: _____

MAXIMUM/MINIMUM: _____

NUMBER OF ZEROS: _____

8.) $y = x^2 - 10$

TRANSFORMATIONS:

VERTEX: _____

DIRECTION OF OPENING: _____

MAXIMUM/MINIMUM: _____

NUMBER OF ZEROS: _____

NAME: _____

9.) $y = -4(x + 9)^2$

TRANSFORMATIONS:

VERTEX: _____

DIRECTION OF OPENING: _____

MAXIMUM/MINIMUM: _____

NUMBER OF ZEROS: _____

10.) $y = \frac{1}{2}(x + 8)^2 - 8$

TRANSFORMATIONS:

VERTEX: _____

DIRECTION OF OPENING: _____

MAXIMUM/MINIMUM: _____

NUMBER OF ZEROS: _____

11.) $y = 10x^2 + 10$

TRANSFORMATIONS:

VERTEX: _____

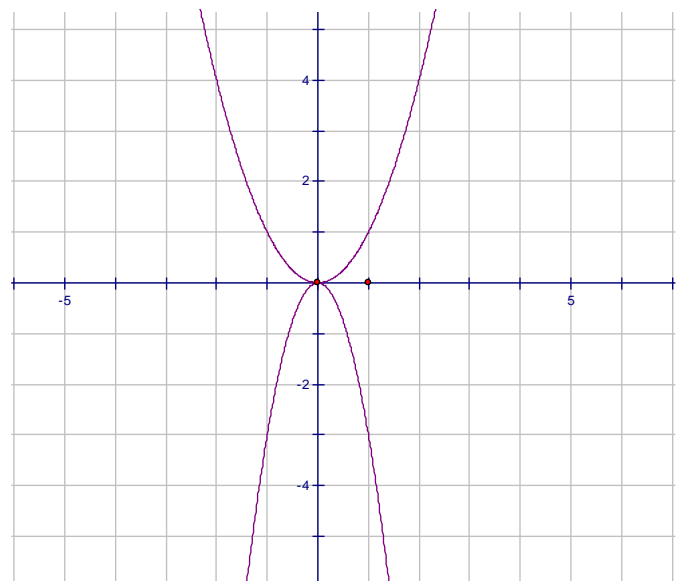
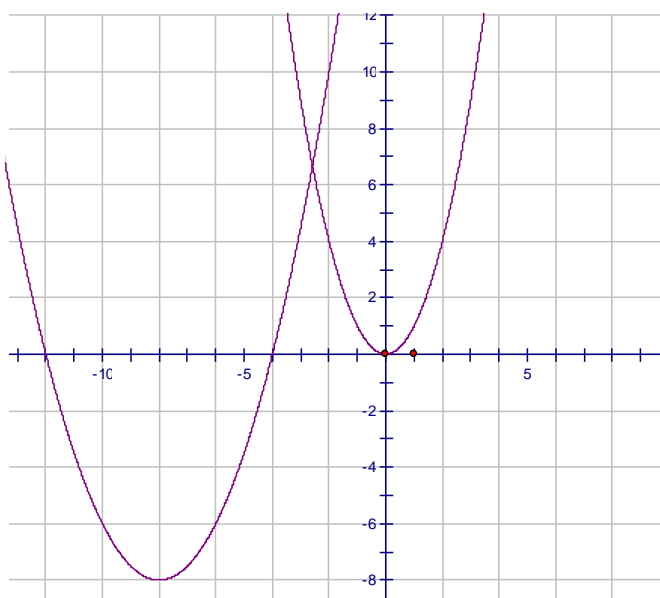
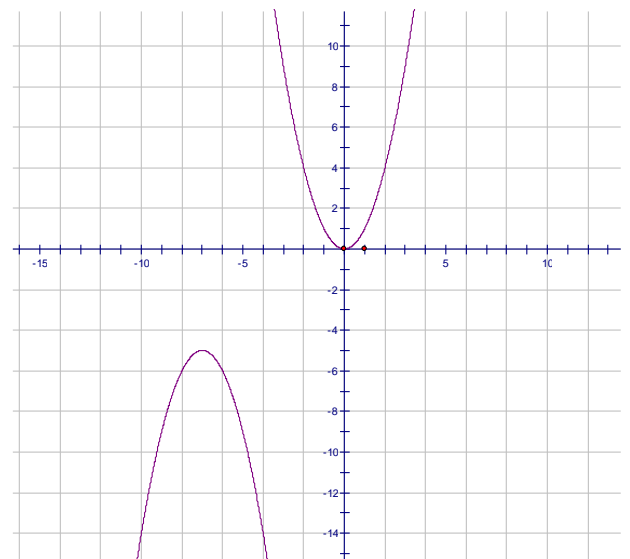
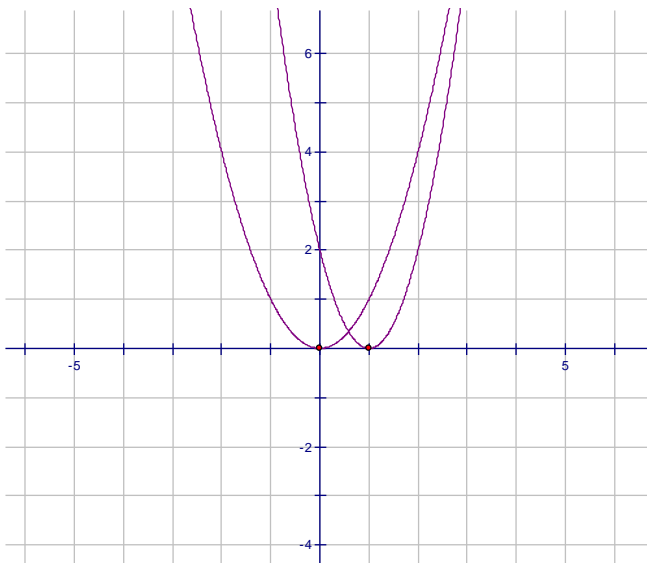
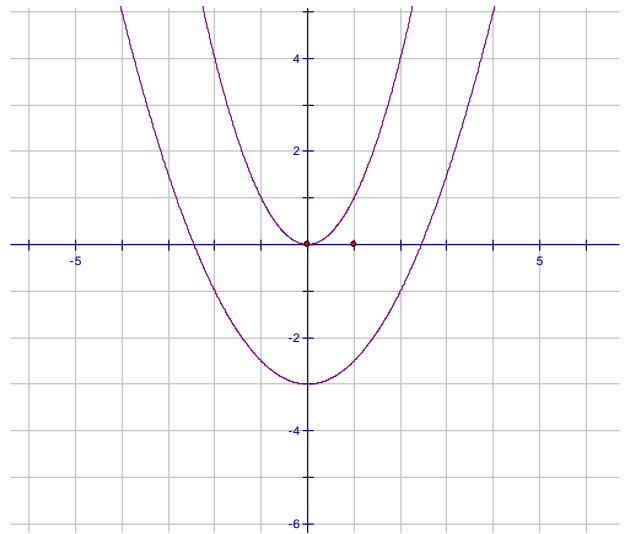
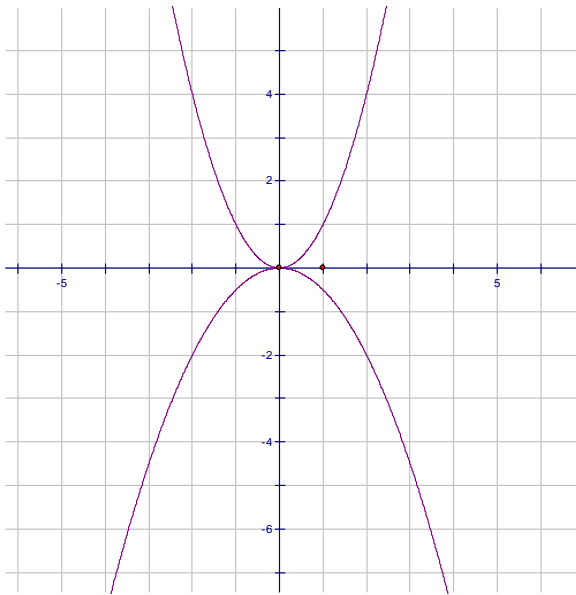
DIRECTION OF OPENING: _____

MAXIMUM/MINIMUM: _____

NUMBER OF ZEROS: _____



NAME: _____



NAME: _____

