

# WELCOME TO GOOGLE CLASSROOM!

## Information for students & parents/guardians



1

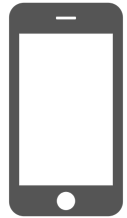
Google Classroom (GC) is:

- a digital online platform for learning available Dufferin-Peel students and teachers.
- Teachers use GC to share assignments, homework, newsletters, announcements, and much more!

2

Dufferin-Peel Google Classroom can be accessed using:

- 1) Using a Computer/Laptop/Chromebook
- 2) Using app-based mobile device (Smart Phone, Padlet, Tablet)



3

**DPCDSB G Suite Login:**

Below are login credentials to access DPCDSB Google Apps (G Suite):

- 1) If using a computer/ laptop/ chromebook, go to a **GOOGLE main page** and **SIGN IN**

Email: [studentnumber@educ.dpcdsb.org](mailto:studentnumber@educ.dpcdsb.org)

Password: your standard DPCDSB password

Make sure to use a Chrome web browser



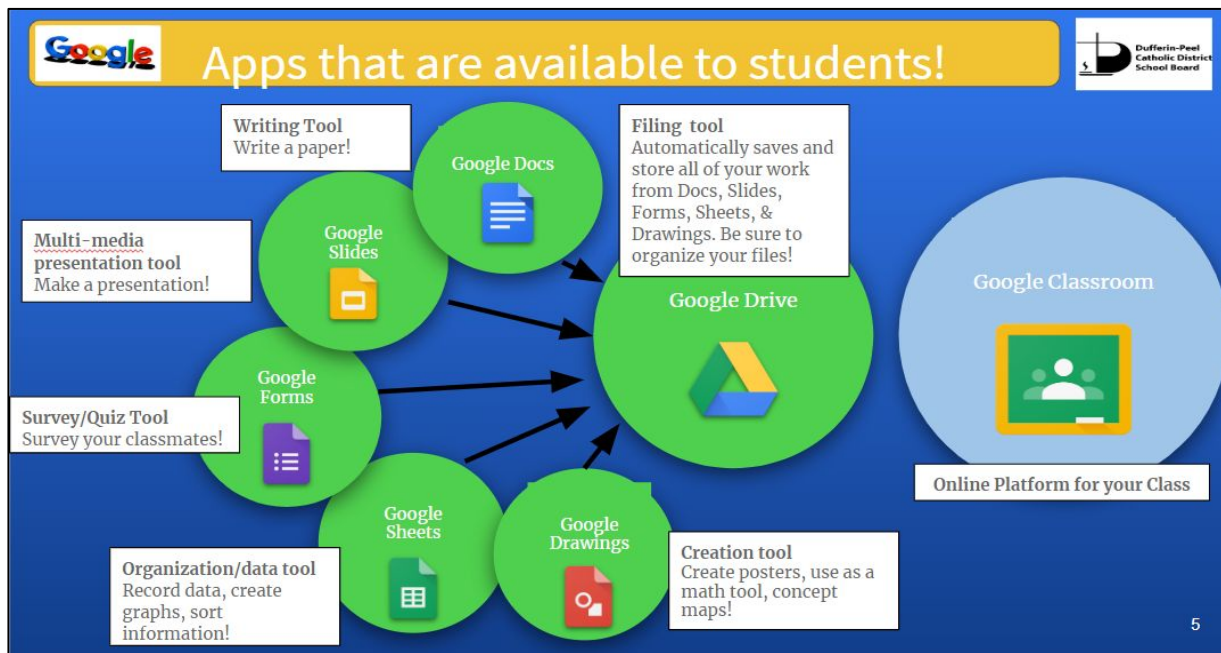
- 2) If using a mobile device, download the Google Classroom App and sign in with credentials above

4

**FORGOT PASSWORD?**

- 1) Access the student portal ([students.dpcdsb.org](http://students.dpcdsb.org))
- 2) Contact teacher

5



6

Once logged in, choose

- 1)
- 2)

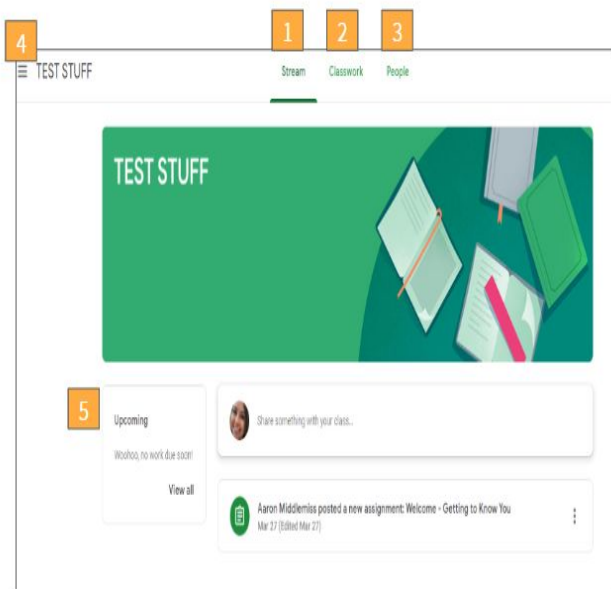


7

**NAVIGATING GOOGLE CLASSROOM**



- 1) The "Stream" tab is where the teacher posts announcements
- 2) The "Classwork" tab is where to view assignments, handouts, and work for a class
- 3) The "People" tab shows classmates
- 4) Click on to see other Google Classrooms
- 5) See all upcoming work to complete



8

**TURNING ASSIGNMENTS IN THROUGH GOOGLE CLASSROOM**



To view the classwork that the teacher has posted, click on the "CLASSWORK" tab

Choose the assignment, and click on "View Assignment"

A new window will open...

- Click "Add or Create"
- Add the assignment

OR

Create the assignment directly

Once done, becomes...

**CLICK TO SUBMIT!**

