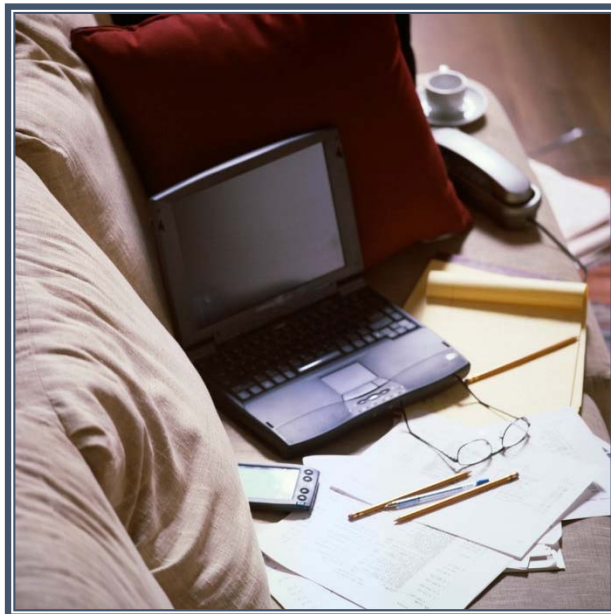


DUFFERIN-PEEL C.D.S.B.

ICT DOCUMENTATION



Citrix Receiver & DP Storefront

*Prepared by: Kathryn Philpott/Yolanda Greco (Citrix Receiver/Storefront Windows 10) 2016-10
V 1.0*

System Requirements

Compatible Operating Systems: Windows 7, 8.1, 10
Mac O/S 10.8 and above

Required software for Windows: Citrix Receiver <https://www.citrix.com/go/receiver.html>

Smartphones and Tablets: ***Many other device types can also connect to Board resources. At this time, ICT cannot support these hundreds of different devices, but ICT will support your login account and address your ability to access the service.*** Android, iOS, and Blackberry users should feel free to download Citrix Receiver from your applicable appstore or direct from Citrix. Once you have the app, just point your Citrix Receiver Account to the address: <https://vpn.dpcdsb.org> for connection. Your board login credentials will be required on your initial setup.

You don't need VPN for...

Please note that a variety of resources are directly accessible from the Internet.

You **DO NOT** need VPN to use:

- Report cards <https://elem-rc.dpcdsb.org> or <https://sec-rc.dpcdsb.org>
- Webmail <http://webmail.dpcdsb.org>
- Tracs <https://tracs.dpcdsb.org>
- The Board website <http://www.dpcdsb.org>
- Office365 <http://dpcloud.dpcdsb.org>

If you require further assistance, please call us:

ICT – Service Desk

Local to CEC: 905-366-3375
Long Distance: 1-866-376-5215
Internal Extension: 25000

Hours of Operation:

Monday – Thursday: 7:30am – 4:30pm
Friday: 7:30am – 4:00pm

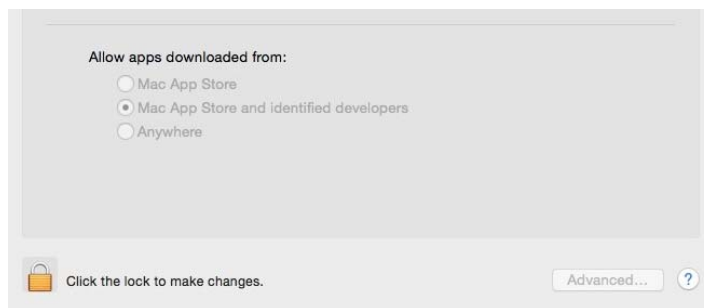
Downloading and Installing Citrix Receiver

Privately owned computer – Citrix Storefront connection

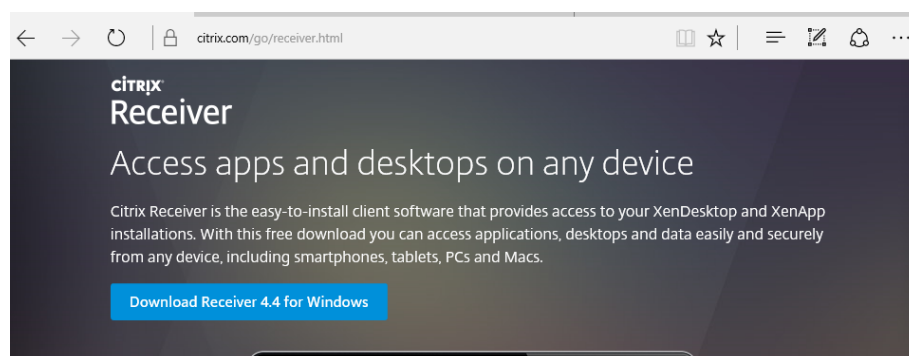
In order to be able to access the published Citrix Applications in DP Storefront, you will need to download and install Citrix Receiver.

1. Connect to the Internet on your personal computer and launch your Web browser. In the address bar of your Web browser, type in the following URL <https://www.citrix.com/go/receiver.html> and hit enter.

Note: If you are using a Mac, you will need to ensure that your Security settings allow you to download the application. To do this, go to System Preferences – Security & Privacy. Temporarily change the option to “Anywhere”. Once you have installed the Citrix Receiver, you can change this back to the previous setting.



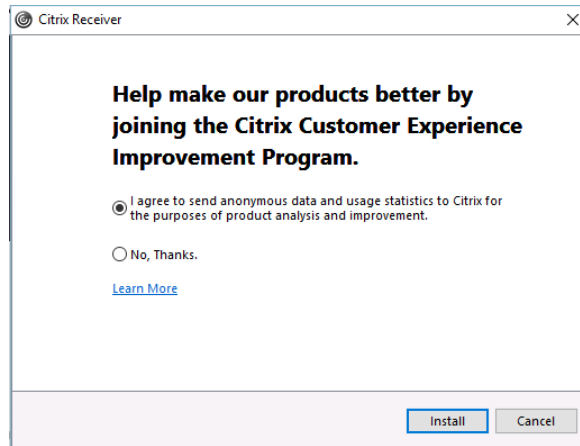
2. Click on the “Download Receiver for Windows button”



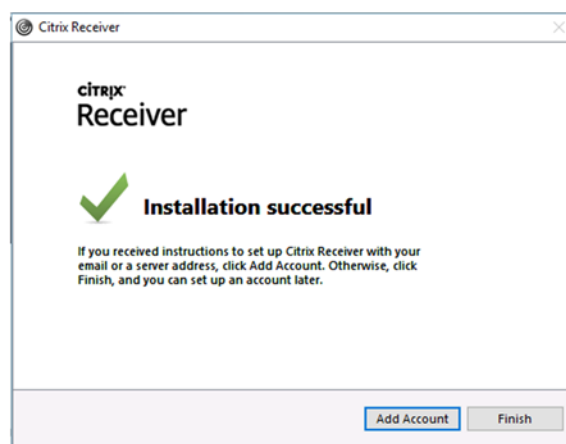
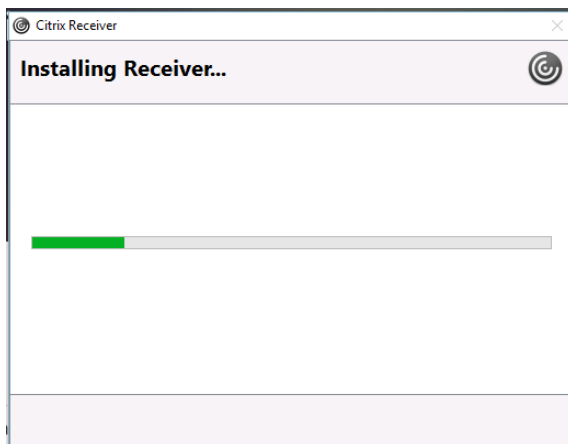
3. Once downloaded, follow the prompts



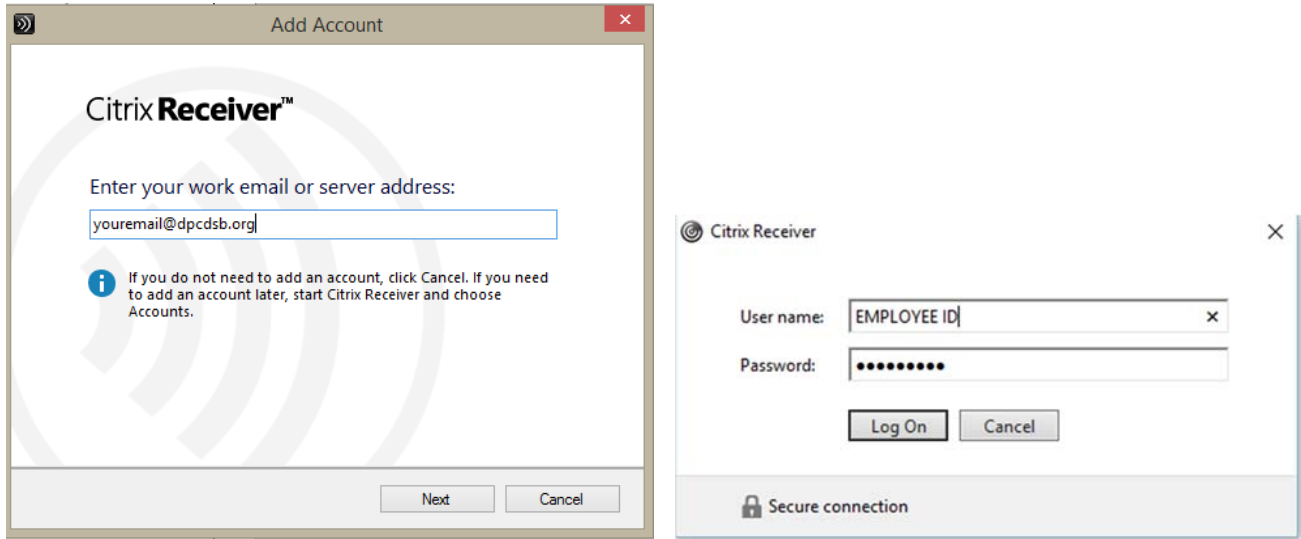
4. You must accept the license agreement to move forward. It is your choice to decide if you wish to join the “Citrix Customer Experience Improvement Program” (Application works with either choice).



5. On completion of the installation, click on “Add Account”.

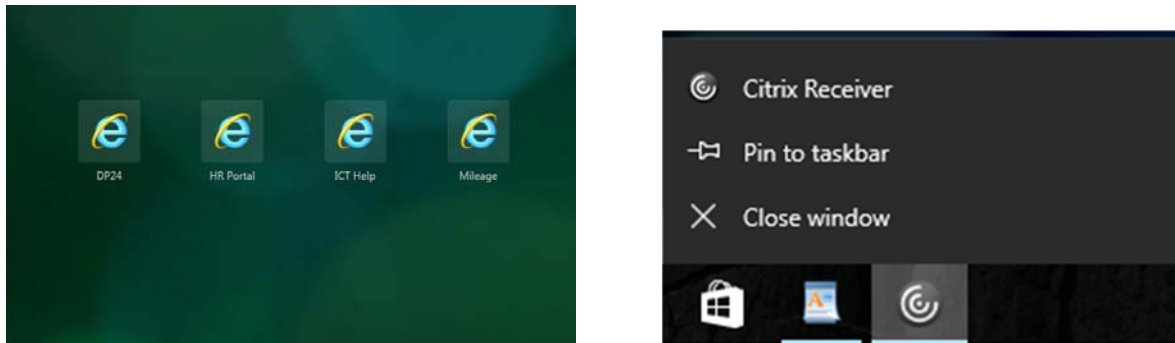


6. Type in your board email address and click “Add”. You will be prompted to type in your Board “Username and Password” and “Log On”.



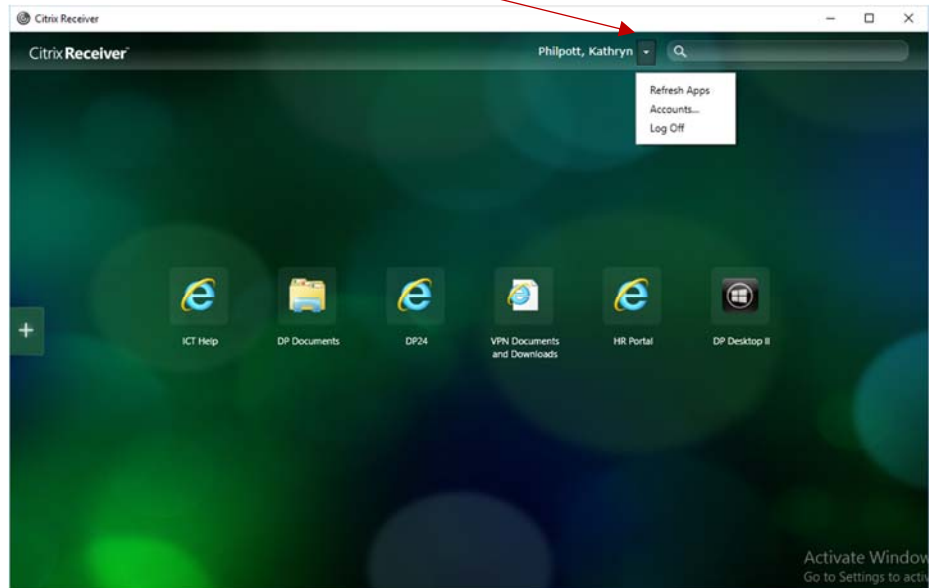
7. Citrix Receiver is now configured to connect to DPStorefront. **A web browser at this point is no longer used to access DPStorefront. Citrix Receiver will do this all for you.**

NB: Not all home pages on DPStorefront will look the same as this is a personal preference. Information on how to add/remove published icons from your home page is explained further on in this document.



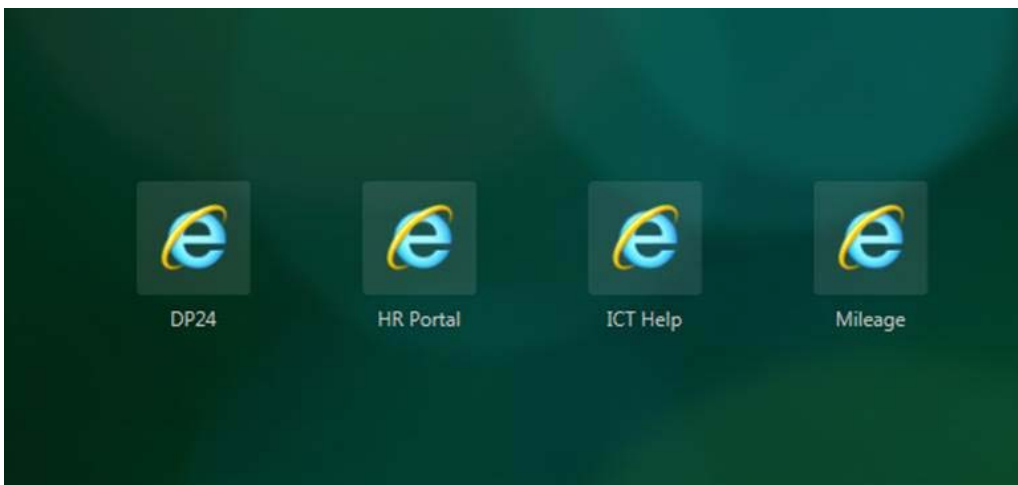
TIP: Window Users - Pin Citrix Receiver to your taskbar for quick easy access. To do this, right click on the Citrix Receiver icon in the taskbar while it is running and select “Pin to taskbar”. Pinning is a great feature to use for quick easy access to all your frequently used applications.

8. To log off DPStorefront, click on the drop down arrow to the right of your name at the top of the page. Select "Log Off".



Citrix Storefront

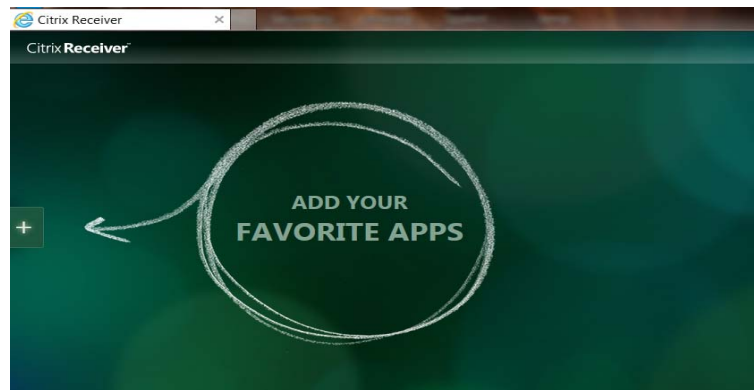
Citrix StoreFront is an enterprise app store that facilitates users to work from anywhere, on any device, with internal Board published applications.



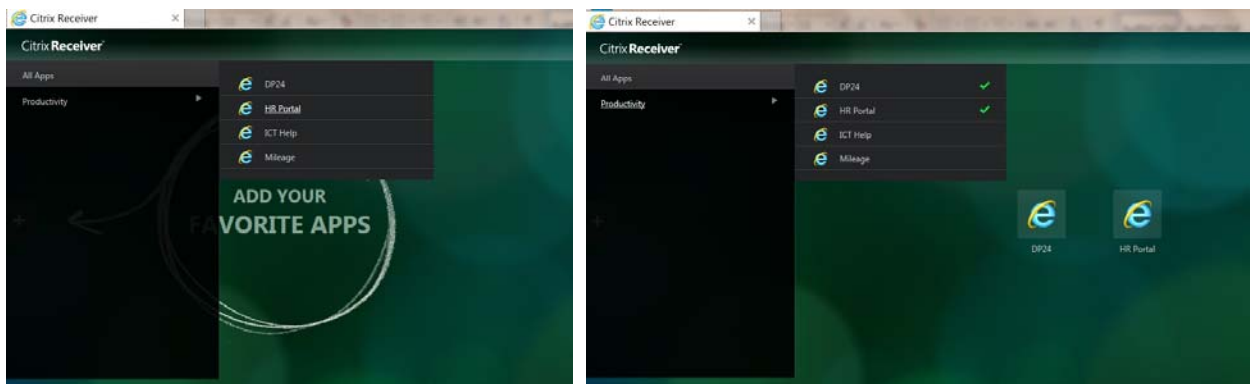
1. Your DPStorefront landing page is unique to you, and is fully customizable. To customize your landing page to show your favourite applications, click on the + button on the left. All applications that you have access to will be listed in the menu that appears. Click to select the application(s) you wish to add to your landing page. This customization will be displayed everytime you login.

Subsequently, follow the same steps to remove applications from your customized landing page by removing the check mark.

NB: A check mark in the application list indicates a favourite that has been added to your landing page.



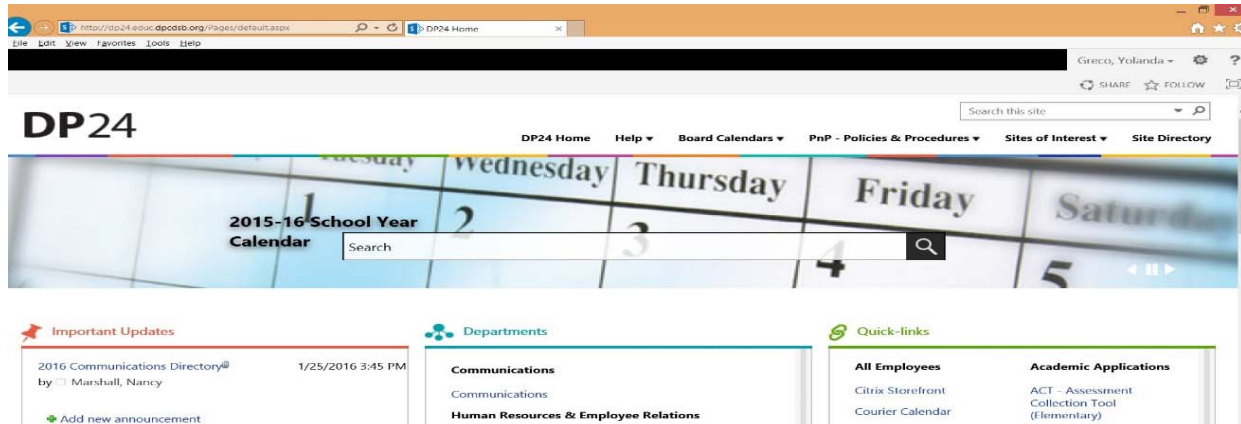
2. To access your published desktops (DP Desktop), click on the “Desktop” button on the bottom of the Storefront page or under the “All Apps” heading.



Most Commonly Used Applications

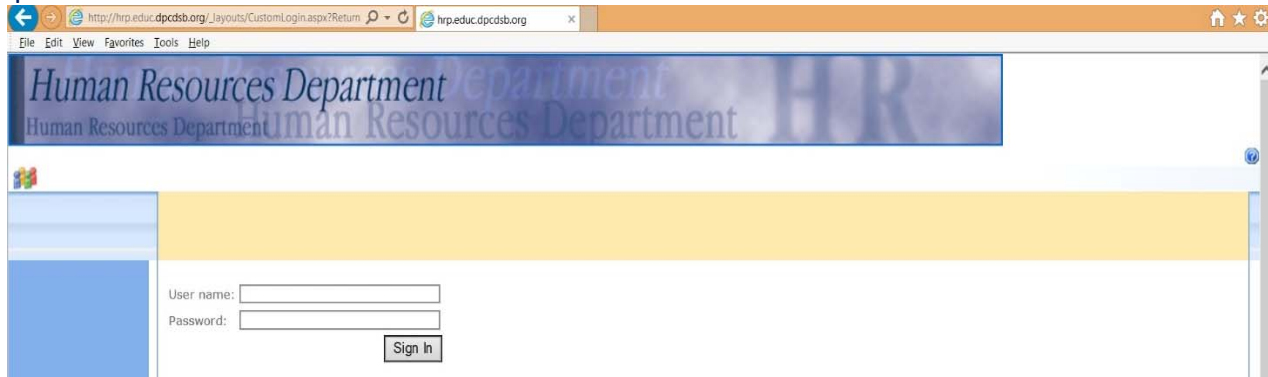
DP24

The “DP24” application will allow you to access the Dufferin-Peel Portal site; where you can find links to common internal portal sites, important updates and information.



HR Portal

The “HR Portal” application will allow you to access the HR Portal; where you can login to see your pay stub, T4 and personal HR information.



ICT Help

The “ICT Help” application will allow you to access the HELP website; where you can create a Heat ticket, find documentation, and access links to commonly used websites and applications.

